

71

70

69

68

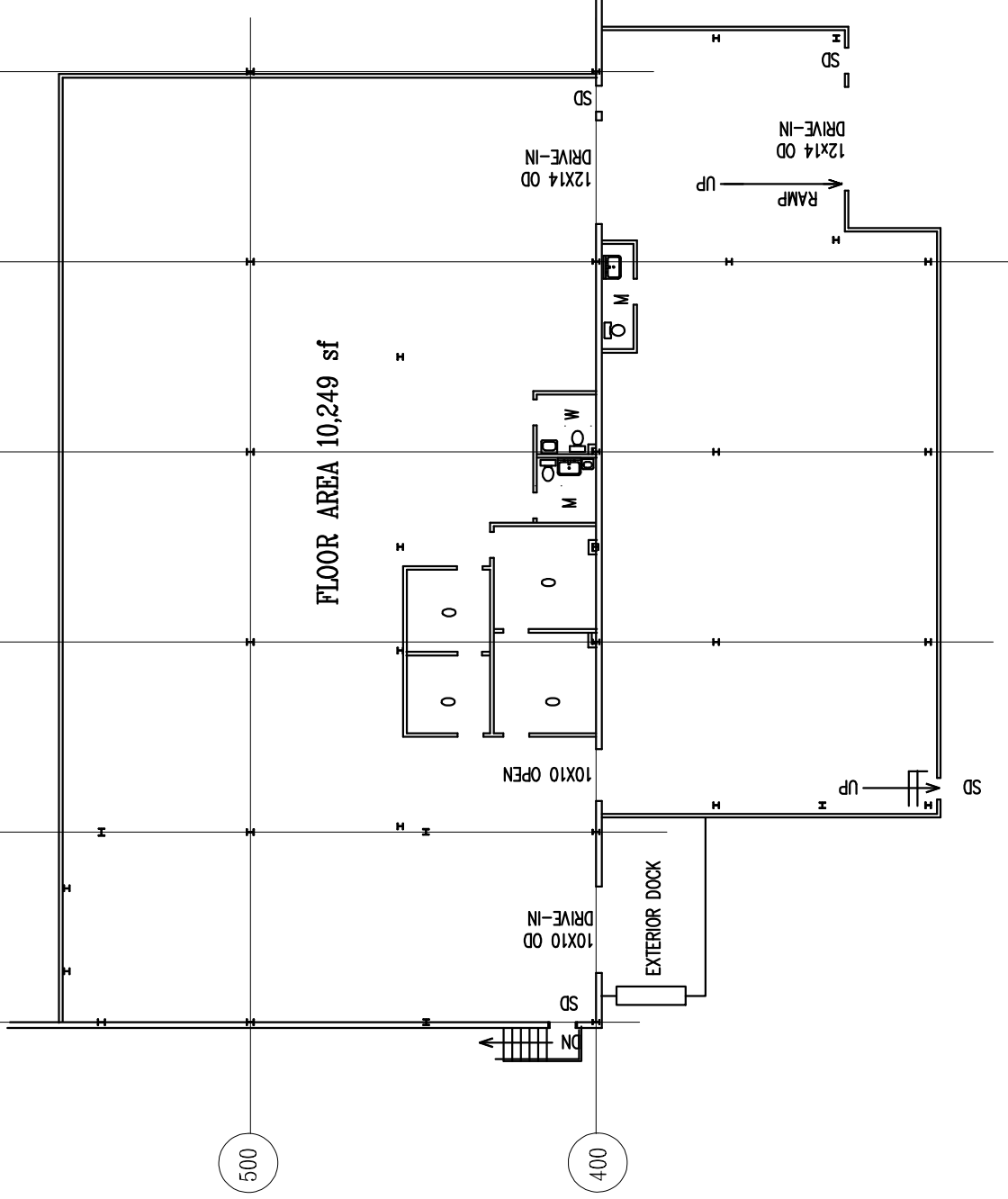
67

66

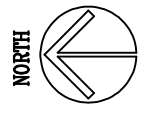
500

400

FLOOR AREA 10,249 sf



- FLOOR AREA 10,249 sf
- CEILING HEIGHT VARIS 18' - 30'
- BAY SIZE 22'X40' & 22'X52'
- LOADING DOCKS 1 (EXTERIOR TYPE)
- DRIVE-IN DOCKS 3
- HEAT NATURAL GAS UNIT HEATER
- RESTROOM 3
- SPRINKLER SYSTEM FULL DRY SYSTEM
- ELECTRICAL SERVICE 277/480V, 3P, 200A



1"=20'-0"

**INTERNATIONAL PARK**  
 COMMERCIAL & INDUSTRIAL BUSINESS CENTER

2701 SOUTH COLISEUM BLVD., FORT WAYNE, INDIANA 46803  
 (260) 426-5680 FAX (260) 422-1329

ALL DOCK OVERHEAD DOORS ARE 6'X8' UNLESS NOTED OTHERWISE  
 ALL SERVICE DOORS ARE 3' WIDE.  
 OD: OVERHEAD DOOR SD: SERVICE DOOR

FLOOR AREA	LOCATION ID.
10,249 sf	1256 BLDG #28